

equity AWARENESS TO equity ACTION



CA PERKINS JOINT
Special
Populations
ADVISORY COMMITTEE

Annual CTE Equity and
Access Conference
NOVEMBER 28-30, 2018

SCHEDULE

California Perkins Annual Equity and Access Conference 2018

Promoting Equity, Access, and Student Success through CE/CTE



KEYNOTE SPEAKERS

Please take a few moments after each session to provide JSPAC feedback at <https://goo.gl/gNjP2C>

GENERAL SESSIONS

Shifting the Education Paradigm of Inequities to Equity Action

William Blackford IV
The Leader in Me - Senior International Consultant
Franklin Covey

Thursday
(12:45PM - 1:45PM)

Building an Equitable California Workforce

Dr. Lynn Shaw
Interim Director Workforce & Economic Development
California Community College Chancellor's Office

Friday
(8:30AM - 9:15AM)

Acknowledging Luck and Breaking Society's Reliance on it as a Tool for Transformation

Solomon Russell
Professor
El Camino College

Friday
(12:35PM - 1:15PM)

"We need to help students and parents cherish and preserve the ethnic and cultural diversity that nourishes and strengthens this community and nation."

Cesar Chavez

The mission of the CA Perkins JSPAC is to promote equity, access and success in CTE for students from special populations by providing educators research based professional development, instructional strategies and resources.

SCHEDULE AT-A-GLANCE

PRECONFERENCE

WEDNESDAY, NOVEMBER 28, 2018

Time	Workshop Name	Presenter/s	Room
12:00PM-3:00PM	Registration		North Lobby-1st floor
1:00PM-2:30PM	Building an Equitable 21 st Century Workforce - Starting Early and Nurturing the Pipeline from K-12 to Careers	Cari Lyn Vinci, Matthew Roberts, Joshua Modlin, Tammy Cronin, Amy Zigler	Sierra
2:30PM-2:40PM	Break	All	
2:40PM-4:10PM	Creating and Offering Equitable Wrap Around Services for Special Populations/Underrepresented Students	Dr. Norman Lorenz, Toni Newman	Sierra
5:00PM-6:30PM	Reception/Networking	All	California-1st Floor

CONFERENCE

THURSDAY, NOVEMBER 29, 2018

Time	Workshop Name	Presenter/s	Room
	Breakfast on your own		
10:00AM-5:00PM	Registration		North Lobby-1st floor
11:30AM-12:00PM	Welcoming Address	Tonette Salter & Alyssa Bahr Casillas	California-1st Floor
12:00PM-12:45PM	Lunch		California-1st Floor
12:45PM-1:45PM	Shifting the Education Paradigm of Inequities to Equity	William Blackford IV	California-1st Floor
1:45PM-2:00PM	Conference Kick-off	JSPAC Co-Chairs	California-1st Floor
2:00PM-2:30PM	Transition		
2:30PM-3:30PM	Breakout Session 1	Various	Various
3:30PM-3:45PM	Reitalize Break		
3:45PM-5:00PM	Breakout Session 2	Various	Various
	Dinner on your own		

CONFERENCE

FRIDAY, NOVEMBER 30, 2018

Time	Workshop Name	Presenter/s	Room
7:00AM-9:00AM	Registration		North Lobby-1st floor
8:00AM -8:45AM	Breakfast		California-1st Floor
8:30AM-9:15AM	Building an Equitable California Workforce	Dr. Lynn Shaw	California-1st Floor
9:15AM-9:30AM	Transition		
9:30AM-10:45AM	Breakout Session 3	Various	Various
10:45AM-11:00AM	Transition		
11:00AM-12:00PM	Breakout Session 4	Various	Various
12:00PM-12:40PM	Lunch		California-1st Floor
12:40PM-1:10PM	Acknowledging Luck and Breaking Society's Reliance on it as a Tool for Transformation	Solomon Russell	California-1st Floor
1:10PM-1:15PM	Closing Session		California-1st Floor
1:30PM-3:30PM	JSPAC Meeting		Sierra

**1:00PM-
2:30PM**

PRECONFERENCE

(BE) Building an Equitable 21st Century Workforce - Starting Early & Nurturing the Pipeline from K-12 to Careers
Cari Lyn Vinci, Matthew Roberts, Joshua Modlin, Tammy Cronin, Amy Zigler (Sierra)

Peek into the future-Get an understanding of why and how the workplace has changed and where it is headed. Discover what students need to know to compete successfully in the 21st Century World of Work. See how you can help motivate your students to be future workers, leaders, and business owners in STE@M™ Careers. This TED-talk panel provides points of view from educators and business people on the importance of building a STRONG workforce.

**2:40PM-
4:10PM**

(ED) Creating and Offering Equitable Wrap Around Services for Special Populations/Underrepresented Students
Dr. Norman Lorenz, Toni Newman (Sierra)

This workshop provides an overview of Sacramento City College’s ability to demonstrate student equity, access, and diversity as it relates to student populations in college. As an Hispanic Serving institution (HSI), many student service and resource programs such as EOPS, Community Of Care, DSPS, SAGE, SESI/STEM, CalWORKS, Umoje-SBA, Puente, and the like enroll students that address the mission of Special Populations. They may also be Economically Disadvantaged, Limited English Proficiency, Learners with Disabilities, Single Parent and/or Displaced Homemaker, and Non-traditional Training and Employment. We will discuss Cross Divisional Program Plans as they address Guided Pathways for Success. Q & A will allow for conversations that partner with regional organizations that assist students to succeed and achieve in college.

Equity Strand
Building an Equitable Workforce - BE
Equity, Diversity, Inclusion, and Access (Guided Pathways, Career Pathways) - ED
Equitable Leadership Practices - EL
Increasing Equity, Access in CTE and STEM - IE
Strategies for Equitable Learning Environments - SE

FULL SCHEDULE THURSDAY

2:30PM-
3:30PM

BREAKOUT SESSION 1

(ED) Adult Education Serving the Most in Need

Neil Kelly (Granada)

Join Neil Kelly from Adult Education Program for an overview of this \$527 million dollar per year program that serves the adults most in need; serving over 450 participating school districts, county offices, and community college districts, and 800,000 adults annually.

(ED) Career Preparation and Workforce Training for Students with Disabilities

Karen Lingenfelter-Carman (Calaveras)

Learn how to add or expand current programs for adults with disabilities through collaboration and partnerships with local businesses and community based organizations; prepare students for success and discover available funding sources to help provide high-quality programs and support for students.

(ED) Equity and Reality(Part I): How Can We Promote Real Equity, Opportunity, and Access?

David Miltzer (Placer)

We will explore what we can do to promote real equity of access and opportunity in a wounded culture. Our “frame” will be “student-centered, strengths-based, trauma-informed, and transcendent purpose driven learning.”

(IE) Increasing Access to CTE Programs through Expanded Learning Programs and Community Partnerships

Dr. Marie M. Pinto (Hermosa)

This session will provide participants with strategies to partner with K-12 after-school programs and community partners to extend the learning in CTE programs from the day program to after school. Strategies to align day and after school curriculum and activities, academies and community collaboration will be shared.

(IE) MESA Empowering in STEM: A Model for Student Success

Consuelo Gonzalez (River/City View)

The MESA program engages special population students in multidisciplinary activities with faculty, students and industry, focused on community building, professional development, leadership and community service.

(IE) Creating Programs for the Formerly Incarcerated

Robert Bowman (Monterey)

STEP-UP provides educational opportunities for current, as well as formerly incarcerated students. The ultimate goal is to give our students the training, confidence, and self-discipline to compete in the labor market and secure sustainable employment upon graduation.

Please take a few moments after each session to provide JSPAC feedback at <https://goo.gl/gNjP2C>

**2:30PM-
3:30PM**

(SE) Special Populations: Looking through the Lens of Continuation High Schools to Career Pathways

Kim Sakamoto (Sierra)

Learn how three exemplary programs engage students with clear, coherent career pathways, informed career exploration, and reliable program learning outcomes, ensuring students build the knowledge, skills, and motivation that allow them to confidently succeed in college, career, and community life.

(EL) Shifting the Paradigm of Inequities to Equity Action - Deeper Dive

William Blackford IV (Balboa)

Tracking outcomes of career pathways across the US has largely been a guessing game over the past 10 years. Now, the Linked Learning Alliance has developed an analytics platform to help pathways, schools, and business partners track important metrics that provide a deeper understanding of how pathways are doing and where they can improve.

**3:45PM-
5:00PM**

BREAKOUT SESSION 2

(ED) Implementation of Dual Enrollment - Lesson Learned

Renee Marshall, Carla Yorke, Christina Mulcahy, Yadira Arellano-Lopez, Kathleen White (Balboa)

California Community College Teacher Preparation Programs will share best practices of dual enrollment and 'pitfalls' to avoid. The teacher shortage is currently hardest felt in specific areas of education, such as Career Technical Education. Attend this session to learn about education pathways, successful models of dual enrollment, and deliberate targeting of underrepresented student populations. Best practices to adapt and adopt will be shared.

(ED) Become an Equity Ambassador for Special Populations in CTE!

Lauren Jones Austin (River/City View)

ACE or the Alternative Cooperative Education has been redesigned. ACE has its own CTSO too. Explore the world of ACE and the equity efforts for teaching pedagogy and CTE messaging.

(ED) Increasing Pathways to College for Undocumented Non-Traditional Students: California's In-State Tuition Expansion (SB 68)

Nancy Jodaitis (Monterey)

Educators will leave with a clear understanding of in-state tuition eligibility requirements, available resources, and effective practices to increase individual and institutional support for undocumented students at their school.

**3:45PM-
5:00PM**

(ED) Mentoring + “Career Sweet Spot” = more Girls and Diversity in CTE & STE@M Careers

Cari Lyn Vinci, Jennifer Horton, Nicole Chaffee Nunez (Sierra)

Experience HOW the “Career Sweet Spot” and the STE@M™ Mentoring Program level the playing field by introducing more young women and diverse students to CTE classes and STEAM careers. Hear stories to inspire our future workers, leaders, and business owners in CTE & STEAM careers.

(IE) Girls in Robotic Leadership-GIRL Camp

Kristina O’Brien, Miriam Gemmell (Granada)

Research shows that during middle school many girls start to fall behind, and take less interest in STEM subjects. The 1-week C-STEM GIRL Camps motivate girls in middle school through peer mentoring by female college and high school students to learn leadership and STEM concepts through a fun and exciting robotics-based curriculum. The best part is, it is FREE to the girls who attend. Come learn how fun and easy it can be to excite girls to get involved in coding and robotics, while showing them the possibilities that lie ahead in their future.

**9:30AM-
10:45AM**

BREAKOUT SESSION 3

(IE) You Know What to Teach, Let's Explore How to Teach it

Leslie Aaronson (Granada)

In this session participants will explore the "EngageCSEdu Engagement Framework" (developed by the National Center for Women & Information Technology) to learn how to create a more student-centered classroom that builds confidence and community, and helps you avoid the teacher "expert trap."

(IE) Are you Building a Bridge to Access?

LeeAnne McNulty (Sierra)

This session outlines predictable ways entities close the doors to some of the populations they serve, rather than opening doors. All participants will be actively engaged throughout the session as they self-reflect, share ideas, examine their practices, and seek new perceptions on daily routines.

(EL) Leading Consciously

Bonnie Ferreira, Cassandra Pye (Hermosa)

An Implicit Bias Primer is designed to better understand the cognitive science behind our unconscious biases. This training provides the basis for effective dialogue on race and equity by covering the most current science around implicit bias and the brain and includes an introduction to de-biasing techniques across personal, interpersonal, institutional, and structural levels.

(SE) Equity, Inclusion and Understanding Students Who are deaf and Deaf

Dr. Evan C. Wirig, Kimberlee A. Wirig, Jennifer Carmean (River/City View)

Deaf students and culture have been widely overlooked by many institutions when considering inclusion and equity. In classrooms deaf students tend to withdraw, especially in group work situations. This panel will discuss common problems and present solutions promoting equity and inclusion with deaf students.

(ED) Leveraging CTE to Support Students in College and Career

James Woods, Elizabeth Kolakoski (Monterey)

Fairfield-Suisun Unified School District leveraged their fiscal and educational resources to create free high quality Career Technical Educational opportunities for students. In January 2018 Fairfield-Suisun Adult School started Automotive, Culinary, Electrical, HVAC, and Welding classes at no cost to students. Students also have access to free childcare while in class, receive academic support in areas of need, complete requirements for a HS Diploma and receive English Language Acquisition support during their program. Information on the marketing campaign will also be included.

FULL SCHEDULE **FRIDAY**

**9:30AM-
10:45AM**

BREAKOUT SESSION 3

(ED) Supporting Formerly Incarcerated Students

Vincent Garret, Alejandra Landin (Monterey)

This workshop will highlight the ways college campus programs can support Formerly Incarcerated Students (FIS) by creating safe spaces that support student retention and achievement; self-efficacy; staffing the program with FIS; building partnerships; and using restorative justice, trauma informed practices in service delivery.

(ED) Work Readiness Portfolios as a Route to Graduation for Students with Disabilities

Katie Kraft (Balboa)

This session will focus on the theory and practice for implementing a Work Readiness Capstone Portfolio as a path to graduation for students with disabilities. Learn how to leverage competency-based learning to support students' post-school/independence goals, be they in the workplace or post-secondary education, as part of their transition IEP.

**11:00AM-
12:00PM**

BREAKOUT SESSION 4

(BE) One Size does not Fit All: The Journey from educational equality to equity

Cristina Sanchez Serrano (Hermosa)

There is a common misconception that equity and equality mean the same thing and that they can be used interchangeably, especially when talking about education. But the truth is, they do not and cannot. Yes, the two words are similar, but the difference between them is crucial. This presentation will help attendees move from equality to equity, in and through career programs, and provide actionable steps to benefit all students, especially our Special Populations.

(IE) Engage Students from Special Populations Students in Career Planning with CalCRN Resources

John Merris-Coots (Balboa)

This session will showcase career exploration and planning resources from the California Career Resource Network (CalCRN). Session attendees will learn how CalCRN's resources can be used to help special population students identify work options that are a good match for their interests and skills, including STEM and non-traditional occupations. CalCRN's core resource, the California CareerZone is available in both English and Spanish. Visit the CalCRN website www.californiacareers.info to learn more about these publicly funded resources.

Please take a few moments after each session to provide JSPAC feedback at <https://goo.gl/gNjP2C>

11:00AM-
12:00PM

(ED) Equity Calls for Decision Education

Chris Spetzler (Granada)

This session introduces a research-based framework for decision education proven successful with economically disadvantaged youth in rural and urban environments. Resources and practical strategies for empowering special population students to make healthy choices will be explored as a critical step toward addressing inequality.

(ED) Changing Lives Forever through Co-Enrollments

Jan Swinton, Judith, Velasco, Dr. Alfred Ramirez, Tina Andersen-Wahlberg (Sierra)

Learn how Glendale's partners, including workforce and community organizations, broke through the silos, regulations, and bureaucracy to develop an integrated strategic co-enrollment system to meet the needs of their students with disabilities.

(ED) Incarcerated/Formerly Incarcerated Transitions

Suzanne Sebring, J. Martin Leyva, Ashley Flores, Eric Stone (River/City View)

In 17-18, Palomar CCD began coordinated efforts to offer classes in the Vista Detention Facility and plan to implement our first Summer Transition Program for formerly incarcerated/justice impacted students. We will share a brief history, our planning process, challenges, promising practices, student perspectives, and results to-date.

(ED) Equity and Reality Part II - How Can We Cultivate Active Hope?

David Militzer (Calaveras)

A paucity of hope correlates to decreased motivation, lower academic achievement, and depression. Given the additional challenges they face, Special Population students may struggle even more than their peers to develop hope. Hope is particularly important because it is a leading character strength, and supports other SEL aptitudes such as resilience, agency, enthusiasm, and growth mindset, as well as active pursuit of career pathways that help prepare for future success. This session will build on themes covered in JPAC's 2017 session "Cultivating Character and Purpose" as well as yesterday's Part 1 workshop, "Equity and Reality" (which is not a prerequisite for attending this workshop.) We will be diving more deeply into understanding the varieties of trauma - including the situational trauma of prejudice and discrimination. We also will discuss the hope construct, which provides direction regarding what kind of educational practices are critically important as well as synergistic.

"We need to give each other the space to grow, to be ourselves, to exercise diversity. We need to give each other space so that we may both give and receive such a beautiful things as ideas, openness, dignity, joy, healing and inclusion."

Max de Pree

“Justice will not be served until those who are unaffected are as outraged as those who are.”
Benjamin Franklin

“Not everything that is faced can be unchanged. But nothing can be changed until it is faced.”
James Baldwin

“Our ability to reach unity in diversity will be the beauty and the test of our civilization.”
Mahatma Gandhi

“We need to make every single thing accessible to every single person with a disability.”
Stevie Wonder

“Equity, just another fair inclusion. An equitable society is one in which all can participate and prosper. The goals of equity must be to create conditions that allow all to reach their full potential. In short, equity creates a path from hope to change.”
Unknown

“An individual has not started living until he can rise above the narrow confines of his individualistic concerns to the broader concerns of all humanity.”
Martin Luther King, Jr.

“I’m inviting you to step forward to be seen & to ask yourself...If not me, who? If not now, when?”
Emma Watson

COMMITTEE MEMBERS

Please take a few moments after each session to provide JSPAC feedback at <https://goo.gl/gNjP2C>

OUR EQUITY LEADERS

K-12 Representatives

Leslie Aaronson
Chris Boynton
Kristen Boroski
Don Isbell
Elodia Ortega-Lampkin
Katrina Johnson Leon
LeeAnne McNulty
Susi Huschle
Andy Page
Daphne Sakamoto Steidl

Community College Representatives

Rosie Antonecchia
Gustavo Chamorro
Roberta Kunkel
Carmen Lamha
Windy Martinez
Sheryl Plumley
Adam Runyan
Frederick Saucedo

Public/Private Sector

Sheila Bollenbach
Marie Ganister
Susan Wheeler

Staff

Gary Page
Tonette Salter
Maureen White

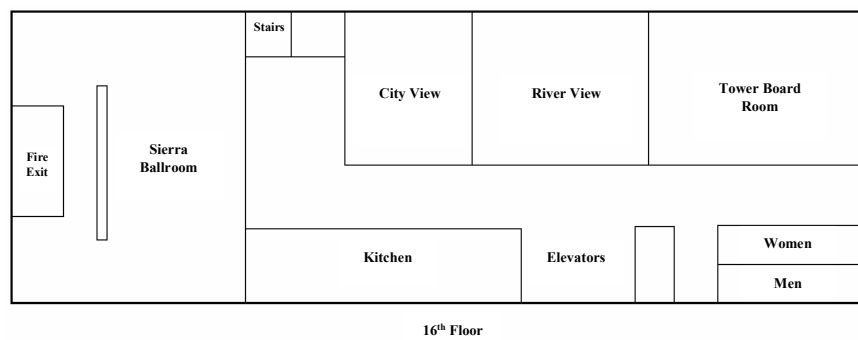
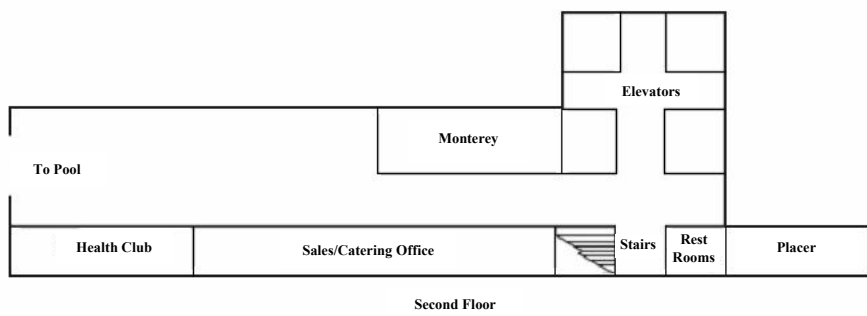
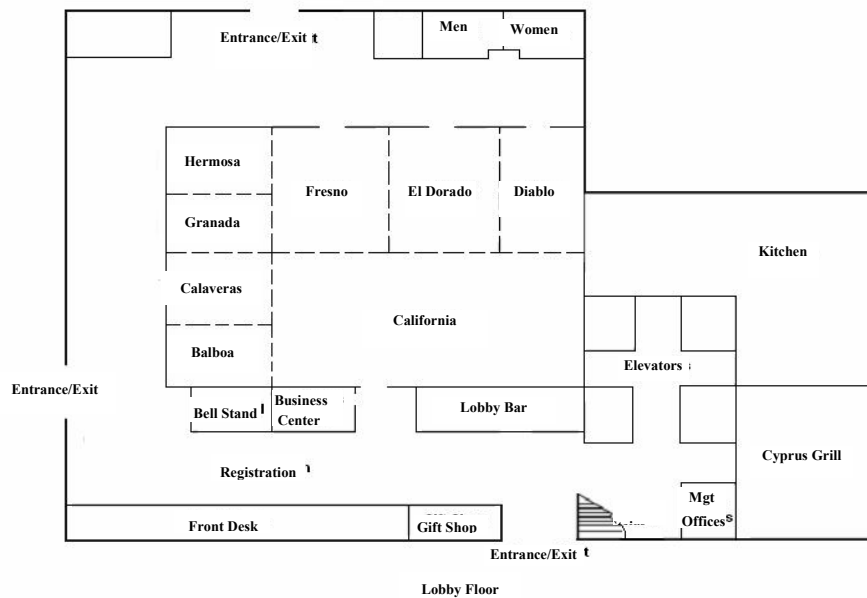
*A special thank you to our
Equity Partners:*

*The Statewide Collaborative for
Special Populations funded by the
California Community College
Chancellor's Office and West Hills
Community College District.*

We cultivate equity

Our committee members are active equity-based capacity building leaders setting high expectations, engagement, expansion and professional growth for educators.

HOTEL MAP



California Perkins Annual Equity and Access Conference 2018

Promoting Equity, Access, and Student Success through CTE



California Perkins Annual Equity and Access Conference **2018**

**Promoting Equity, Access,
and Student Success through CTE**

