

California Perkins Annual Equity and Access Conference 2017

Promoting Equity, Access
and Student Success through CTE

WHAT'S YOUR FRAME? ACHIEVING EQUITY AND ACCESS THROUGH CTE

CONFERENCE SCHEDULE

KEYNOTE SPEAKERS

Please take a few moments after each session to provide JSPAC feedback at <https://goo.gl/Z9Zf8w>

GENERAL SESSIONS

Thursday (12:45PM - 1:45PM)

Create A Framework that Works for All

Stephen Hanamura
President
Hanamura Consulting, Inc.
sh@hanamuraconsulting.com

Friday (8:15AM - 9:15AM)

Tangible Experiences from Women of Color in the IT Field

Donna Hale (Facilitator)
Mzdlhale@gmail.com

Azizi Penn (Panelist)
zzpenn@gmail.com

Dr. Demetra L. Davis, DM, MMPA, PMP (Panelist)
Demetra.Davis@doj.ca.gov

Eliza Yam (Panelist)
eliza.yam@water.ca.gov

Lixa Anderson (Panelist)
Lixa.Anderson@safecu.org

Friday (12:35PM - 1:15PM)

Space: The Final Frontier or the New Beginning?

Chris Boynton
cboynton@acoe.org

Wifi Password:120217

*The **mission** of the CA Perkins JSPAC is to promote equity, access and success in CTE for students from special populations by providing educators research based professional development, instructional strategies and resources.*

California Perkins Annual Equity and Access Conference 2017

Promoting Equity, Access and Student Success through CTE #JSPAC4equity

SCHEDULE AT A GLANCE

PRECONFERENCE WEDNESDAY, NOVEMBER 29, 2017

Time	Workshop Name	Presenter/s	Room
12:00PM-4:00PM	Registration		1st floor
1:00PM-4:00PM	CTE LaunchBoard	Randal Tiller	City View
1:00PM-4:00PM	Mapping CTE Courses	Charlene Cowan/Co-Presenter	Sierra
1:00PM-4:00PM	Analyzing Assignments	Dr. Tanji Marshall	River View

CONFERENCE THURSDAY, NOVEMBER 30, 2017

Time	Workshop Name	Presenter/s	Room
8:00AM-5:00PM	Registration		1st floor
10:30AM-11:15AM	Continental Breakfast		California
11:30AM-12:00PM	Welcoming Address	JSPAC Co-Chairs	California
12:00PM-12:45PM	Lunch		California
12:45PM-1:45PM	Create A Framework	Steve Hanamura	California
1:45PM-2:00PM	Conference Kick-off	JSPAC Co-Chairs	California
2:00PM-2:30PM	Transition		Various
2:30PM-3:30PM	Breakout Session 1	Various	Various
3:30PM-3:45PM	Transition		Various
3:45PM-5:00PM	Breakout Session 2	Various	Various
5:30PM-6:30PM	Reception/Networking		California

CONFERENCE FRIDAY, DECEMBER 1, 2017

Time	Workshop Name	Presenter/s	Room
8:00AM-9:30AM	Registration		1st floor
8:00AM -8:45AM	Breakfast		California
8:15AM-9:15AM	Tangible Experiences	Donna Hale/Co-Presenters	California
9:15AM-9:30AM	Transition		Various
9:30AM-10:30AM	Breakout Session 3	Various	Various
10:30AM-10:45AM	Transition		Various
10:45AM-12:00PM	Breakout Session 4	Various	Various
12:00PM-1:15PM	Lunch		California
12:35PM-1:15PM	Space: The Final Frontier	Various	California
1:15PM-1:30PM	Closing Session		California
1:45PM-3:45PM	JSPAC Meeting		River View

California Perkins Annual Equity and Access Conference 2017

Promoting Equity, Access
and Student Success through CTE
#JSPAC4equity

FULL CONFERENCE SCHEDULE

WEDNESDAY, NOVEMBER 29, 2017

1PM-4PM

PRECONFERENCE

CTE LaunchBoard
Randal Tiller (City View)

Mapping Local CTE Courses to New CALPADS State Course Codes
Charlene Cowan, Paula Mishima (Sierra)

Analyzing Assignments through the Lens of Equity
Dr. Tanji Marshall (River View)

This session is designed to provide an overview of how educators can analyze the assignments they develop for students to ensure high rigor and equitable learning for all students.



In Loving Memory

Please join us as we honor Elizabeth Wallner, former California Community College Association for Occupational Education (CCCAOE) Executive Director and a leader with the Joint Special Populations Advisory Committee (JSPAC). On Tuesday, July 18, Elizabeth passed away concluding her 6-year fight with cancer. Her son Nathaniel, reported she passed away surrounded by many that she loved. She was an extraordinarily humble individual and will be missed but not forgotten.

Supporter, Leader, Educator, Philanthropist, Believer of Career Technical Education, and underrepresented are only a few of Elizabeth's talents. She had no boundaries of love and passion for all.

She is etched in our hearts and minds and will be deeply missed. What an amazing example of living an enduring life to the end.

2:30PM-3:30PM

Breakout Session 1**Accruing Social Capital Equitably in Community College**

Theresa Lorch (Hermosa)

The power of relational ties was revealed in how students relate to one another in a cohort setting, i.e. the classroom. How nontraditional students relate to staff and faculty depends upon how they experience their value to others and develop a sense of belonging.

Adult Education Supporting Special Populations: Literacy and Workforce Training Services

Abby Medina, Carmen Martínez-Calderón, Ph.D, Jose Ortega (Granada)

This session will provide information on California's Adult Education Program. The audience will walk away with an understanding of the Adult Education Systems' program areas that address the needs of special populations including: immigrants, adults with disabilities, and institutionalized individuals, among others.

Preparing Small Businesses for Working with Students with Disabilities

Claire Michaels, Amira Dunn (Calaveras)

Last summer, Jewish Vocational Services (JVS) and SFMade collaborated to create a workshop for small manufacturing businesses to help prepare them for hosting student interns with active IEPs.

Strategies from CCCMaker Network to Engage Students through Making and Innovation

Maura Devlin-Clancy, Loanna Latridis, Zachary Dowell (Sierra)

The mission of the California Community College (CCC) Maker initiative is to build a community of college makerspaces that welcome non-traditional students, support faculty in embedding making into instruction and offering adaptive curriculum, and partner with businesses to produce innovation-ready graduates inspired to contribute to the creative economy.

Program Integration, Student Equity, Basic Skills and SSSP

Rhonda Mohr (Balboa)

From a joint advisory committee to a combined annual program plan, integration makes sense and is the most effective way of leveraging program funding and outcomes to increase student success.

CTE Corrections Partnerships

Rebecca Silbert, Robert Bowman (River View)

Incarcerated students, and formerly incarcerated students on campus, have long sought to change their lives with the help of community colleges. This session will highlight two colleges working with their local jail and formerly incarcerated students to build pathways to success through CTE.

Breakout Session 1

2:30PM-3:30PM

Inspiring Courage to Excel through Self-Efficacy

Mimi Lufkin (City View)

Learn strategies for increasing your students self-efficacy to succeed in school and pursue a nontraditional career. Self-efficacy, the belief that one can achieve specific goals has proven to affect achievement including task choice, persistence, goals, effort and skill acquisition.

From Guessing to Data for Career Pathways

Sara Pietrowski (Monterey)

Tracking outcomes of career pathways across the US has largely been a guessing game over the past 10 years. Now, the Linked Learning Alliance has developed an analytics platform to help pathways, schools, and business partners track important metrics that provide a deeper understanding of how pathways are doing and where they can improve.

3:45PM-5:00PM

Breakout Session 2

More Women in CTE: How To

Donna Milgram (Hermosa)

Learn proven recruitment and retention practices and strategies so you can see more female students succeed in your CTE classes within the next year. Donna Milgram -- Executive Director of the National Institute for Women in Trades, Technology and Science -- will share proven practices and strategies that resulted in real increases in female enrollment and in female and male completion rates in CTE programs around the country.

Cultivating Character and Purpose

David Militzer, Makenzie Darling (Calaveras)

We will discuss how character strengths play a vital role in Social and Emotional Learning. We will share ways in which the science of character is being used as a powerful construct for helping students understand their unique combination of strengths and how they can be applied to career and postsecondary preparation.

Analyzing Assignments through the Lens of Equity -

Dr. Tanji Marshall (Balboa)

This session is designed to provide an overview of how educators can analyze the assignments they develop for students to ensure high rigor and equitable learning for all students.

Engage Students in Career Planning with CalCRN Resources

John Merris Coots (River View)

This session will provide an overview of the California Career Resource Network's (CalCRN) career exploration and planning resources. Session attendees will learn how CalCRN's resources can be used to help students identify occupational options, develop Career Action Plans, and relate their school experiences to career goals.

Please take a few moments after each session to provide JSPAC feedback at <https://goo.gl/Z9Zf8w>



3:45PM-5:00PM

Breakout Session 2

FasTracking the Admission Process – A SSSP Strategy to Increase Student Enrollment

Tina King, Jason Makabali, Dulce Delgadillo, Harpreet Uppal (Granada)

As a means of increasing enrollment at a noncredit adult education institution, the Student Success and Support Program (SSSP) spearheaded an event that provided one-stop counseling services to students to expedite the matriculation process.

Equity Issues Along the Pathway

Ray Kauup, Vera Jacobson-Lundeberg, Ed.D., Alex Ronald Jones, Mallory J. Stevens (Sierra)

This panel of K-12, Adult Education, Community College, and Workforce Development practitioners will cover the ways in which data reveals a changing equity landscape as students move through career programs in high school, into community colleges, and then into the workforce. You'll also hear how race, class, and gender intersect with Perkins' Special Populations taxonomy, including what we hope to be a lively discussion on approaches to address the issues raised.

Designing and Scaling College and Career Pathways for Opportunity Youth

Amanda Issa (City View)

Learn how SIATech, a network of fully accredited public charter high schools focus on dropout recovery for opportunity youth ages 16-24, and designing college and career pathways for students in alternative settings, such as Job Corps and independent study programs for students across the country.

Empowering Undocumented Students in their Academic and Career Goals

Nancy Jodaitis (Monterey)

This presentation will provide educators with information, resources and best practices to support undocumented students in their academic and goals. Educators will receive an overview of in-state tuition (AB 540) the CA Dream Act, and the current status of DACA. Information will also be shared about entrepreneurship opportunities for all immigrants, regardless of legal status.

Please take a few moments after each session to provide JSPAC feedback at <https://goo.gl/Z9Zf8w>



9:30AM-10:30AM Breakout Session 3**Counseling and Advising CTE Students with Special Needs**

Windy Franklin, Querida M. Martinez (Granada)

Students from special populations often need extra support. This workshop aims to provide educators, counselors, and administrators with information on how to effectively counsel all students about exploring and navigating the CTE pathway.

Bridging 21st Century Professional Skills and Student Success

Shannon Penn (Balboa)

This workshop will explore the ACE model which helps under-prepared students achieve academic and career success using an affective non-cognitive approach. Students recognize the value in learning transferable skills that can be applied in the classroom and the workplace. This adaptable model is evidenced based and studies show ACE students are impacted in three areas of student success: academic, personal, and professional.

Pathway Models in Alternative Schools

Amanda Issa, George Alonzo, Ardarius McDonald (Calaveras)

This workshop will explore the variety of pathway models throughout alternative schools in Alameda County. Developing pathways within alternative schools exposes a number of different challenges from programs in comprehensive and/or small school settings.

The Impact of Education Coaching on Students with Disabilities (Hermosa)

Harpreet Uppal, Ph.D. Tina King, Ed.D., Jason Makabali, Dulce Delgadillo

To better serve the students with disabilities at a postsecondary noncredit institution, student equity funded an activity to improve the success of students with disabilities enrolled in Career and Technical Education (CTE) courses. This session will discuss the impact of educational coaching on the success of students with disabilities in CTE courses. Findings from a comparative analysis between students who received services and those who did not will be shared.

Serving CTE Special Populations Through an Equity Lens

Jeanie M. Tyler, Seher Awan, Sudabeh Phillips (Sierra)

While looking at enrollment management strategies for the Cosmetology, Esthetician, and Nail Technician programs at San Diego City College, the Dean and Department Chair realized student barriers to enrollment were access issues that prohibited program enrollment for several disproportionately impacted populations. Using program and campus equity data, the department identified key strategies that would provide access to key populations. This presentation will share the strategies and provide a framework for having critical conversations on your campus.

Please take a few moments after each session to provide JSPAC feedback at <https://goo.gl/Z9Zf8w>

9:30AM-10:30AM

Breakout Session 3

Equity and Access in the Gig Economy

Molly Stuart, JD (City View)

Attendees will gain a conceptual understanding of the many ways that diversity-identity impacts underrepresented students. Examples and ideas on how business ownership, entrepreneurship and especially the “Gig” economy can lower the barriers to education and economic development, and how the gig economy can serve students and workers outside the mainstream.

10:45AM-12:00PM

Breakout Session 4

Percentage Point Gap Method in Analyzing

Disproportionate Impact

Caroline Ramirez-Faghih, Mia Keeley, Sharon Brisolaro (Calaveras)

There are several ways of analyzing disproportionate impact. The percentage point gap methodology is the easiest one to use because it calculates the differences of percentages. This presentation will focus on how to use this method, and apply the specific threshold in identifying disproportionate impact. This is important because the data involving special populations have small sample sizes. Participants of this session will analyze data from the Scorecard and Data Mart (CA Community College Chancellor’s Office) in order to understand disproportionate impact and equity gaps.

Everyone Needs a Ten Year Plan

Geno Malkiewicz (Balboa)

Elk Grove Adult and Community Education's Career and Academic Preparation (Adult Basic Education) program uses the Career Choices and Changes curriculum to gently guide students through the process of making some of life's most important decisions. Students exit the 18 week course with a researched, realistic, and actionable plan for their postsecondary education, career, and lifestyle. About 95% of our students have implemented their plans and have persevered.

Strategies for Recognizing and Counteracting Unconscious Bias

Olivia Herriford (City View)

How do we as educators develop the cultural humility necessary to create learning environment where all of our students feel valued and respected? We must become mindful of our behaviors, learning to recognize and counteract the biases we all have. This sessions share strategies for recognizing and counteracting unconscious bias with emotional intelligence and mindfulness.

Launching the First Campus Climate Survey at a Noncredit Institution

Dulce Delgado, Tina King, Ed.D., Jason Makabali, Harpreet Uppal (Sierra)

The disparity between available jobs and the number of unemployed youth raises the question about how we are preparing students for the evolving workforce. Educational approaches that address these issues, such as Linked Learning, aim to do so by better preparing students for college, career, and life.



Breakout Session 4

Uniquely Abled: A Business Led Initiative to Employ People with Autism

Jan Swinton, Judith Velasco, Alfred Ramirez, James Phillips, Nancy Osipo-Peera (Hermosa)

This workshop introduces the Uniquely Abled Academy established in Glendale to address the human capital needs of local manufacturing companies.

That's So Meta(cognitive)!: Advancing STEM Learning for All

Kay O'Neill, Karen Fullerton, Nika Hogan, Ph.D., Theresa Martin, (Granada)

In this breakout session you will experience STEM pedagogies designed for inquiry into the discipline-specific habits of mind that are crucial to learning and understanding subject matter. You will experience how students learn to 'think like a DevOps engineer' to prepare diverse students for critical thinking and problem solving necessary to sustain careers in the tech workforce. Participants of this session will analyze data from the Scorecard and Data Mart (CA Community College Chancellor's Office) in order to understand disproportionate impact and equity gaps.

Linked Learning: Implementation to Certification

Anna Fontus and Co-Presenter (Monterey)

The Linked Learning (LL) approach integrates rigorous academics that meet college-ready standards with sequenced, high-quality career-technical education, work-based learning, and supports to help students stay on track. This session will discuss how California Partnership Academies, NAF academies, and other career pathway models are acknowledged through Linked Learning certification and how pathway team collaboration and continuous improvement is supported by the portal.

Merit Badges: School-wide Collaboration & Support of CTE Skills

Kari Tyler and Co-Presenter (California Ballroom)

Implementing a program "Merit badges" system: Students earn portfolio building "badges" when they complete a skill. CTE teachers collaborate to identify essential skills, aligned to program standards and/or school ESLRs.

Effective Strategies for Supporting the Academic Participation and Workforce Preparation of Students with Intellectual Disabilities

Wilbert Francis, Tasneem Sah, M.S., Lindsay Eigenauer, M.S (River View)

An increasing number of students with intellectual disabilities are participating in a range of academic and career technical education (CTE) courses. This presentation provides outcome data and strategies to highlight how some College to Career (C2C) programs are assisting these students to participate in and achieve success in CTE courses.

Please take a few moments after each session to provide JSPAC feedback at <https://goo.gl/Z9Zf8w>



COMMITTEE MEMBERS

Please take a few moments after each session to provide JSPAC feedback at <https://goo.gl/Z9Zf8w>

Our Equity Leaders

We Cultivate Equity

Equity is a process that involves creating and sustaining progress.

Our committee members are active equity-based capacity building leaders setting high expectations, engagement, expansion and professional growth for educators.

K-12 Representatives

Chris Boynton
George Essel
Denise Estrella
Micah Freeman
Susi Huschle
Daphne Sakamoto Steidl
Joseph Stymeist

Community College Representatives

Rosie Antonecchia
Josepha Baca
Roberta Kunkel
Carmen Lamha
Windy Martinez
Sheryl Plumley
George Railey
Adam Runyan
Jan Swinton

Public/Private Sector

Sheila Bollenbach
Deanna Hanson
Laurie Harrison
LaVonne Slaton
Freda Walker
Susan Wheeler

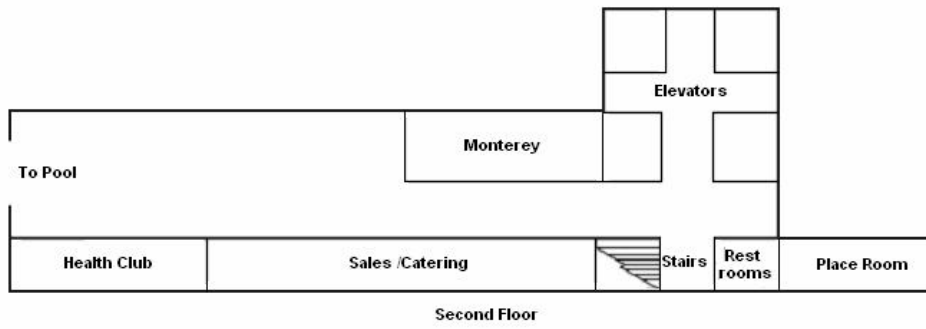
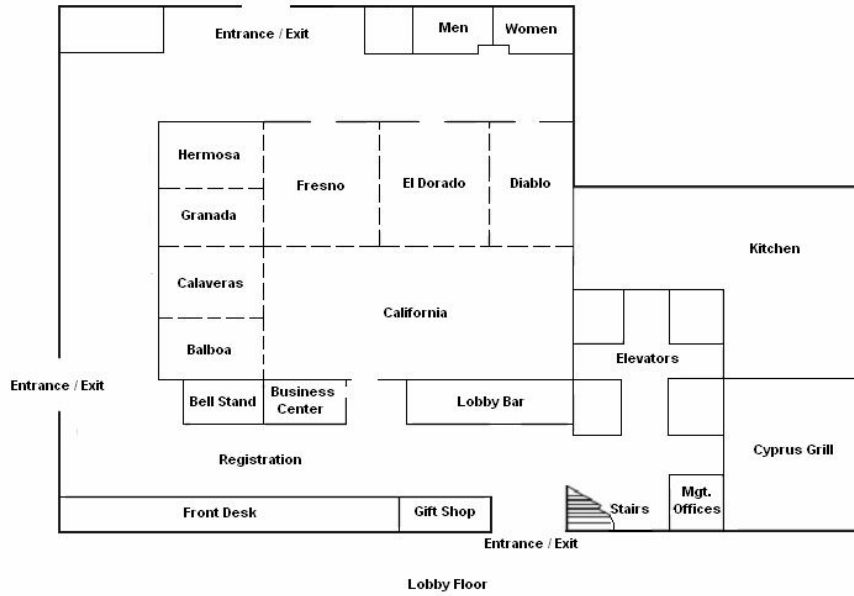
Staff

Sally Cox
Topher Enders
Tonette Salter
Maureen White
Carolyn Zachry

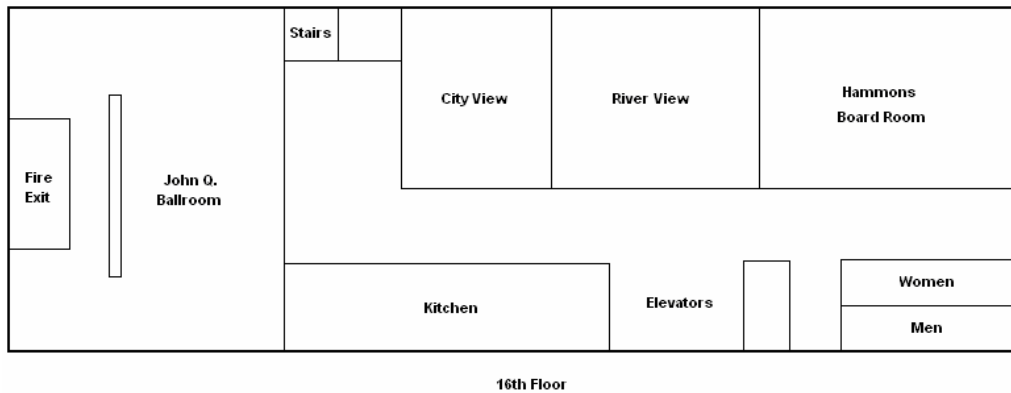
Ex Officio Member

Lynn Shaw

HOTEL MAP



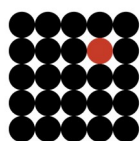
John Q. Ballroom is Sierra Hammons
 Board Room is Towers





California Perkins Annual Equity and Access Conference 2017

Promoting Equity
and Student Success through CTE



CA PERKINS JOINT

**Special
Populations**

ADVISORY COMMITTEE